

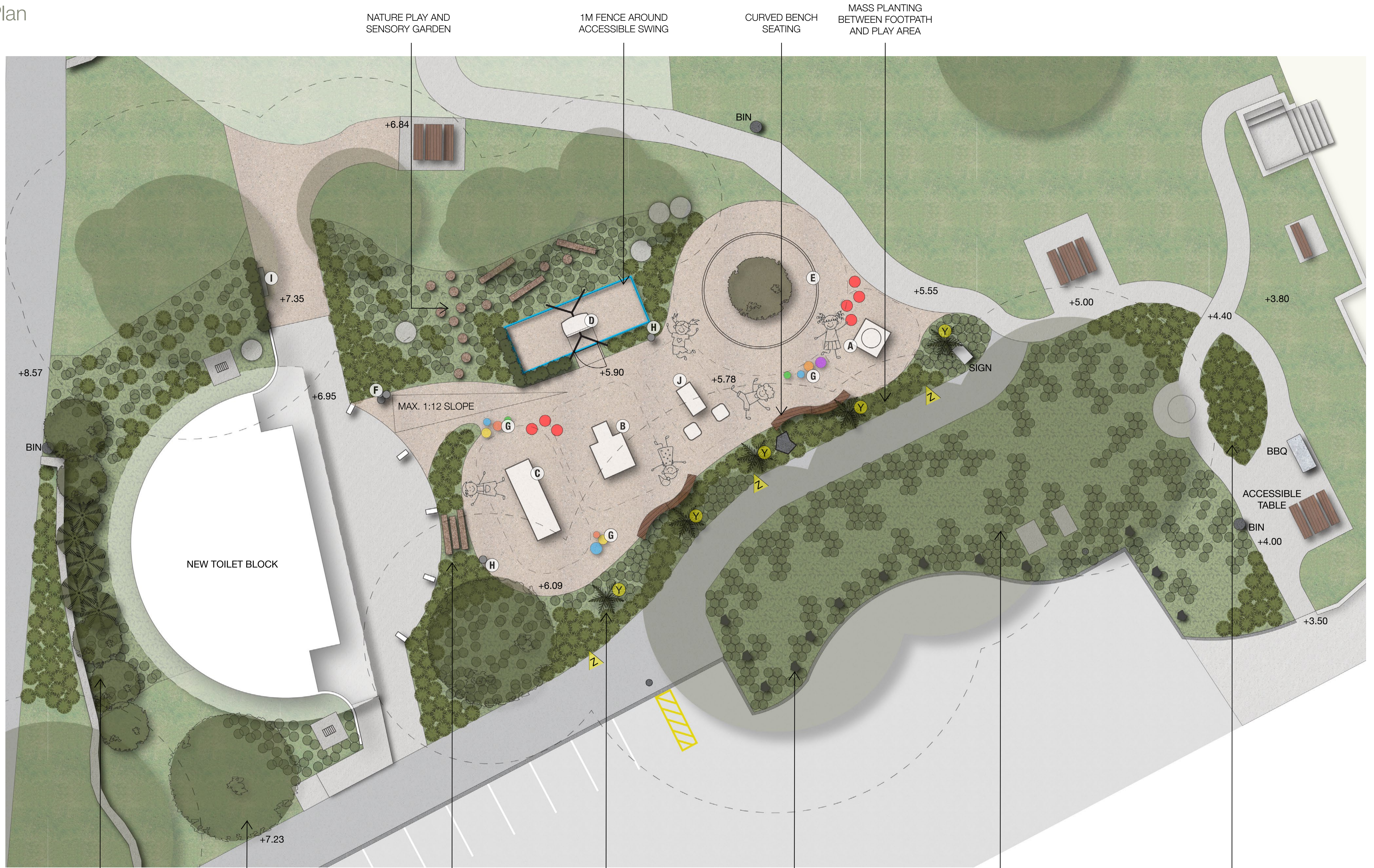
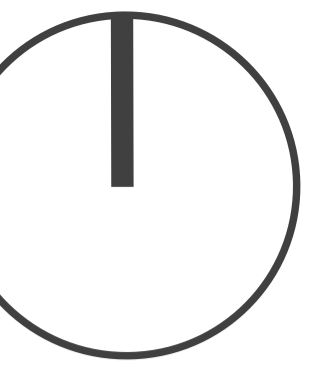
<i>LANDSCAPE PLAN</i>	L101
<i>PLANTING PLAN</i>	L102
<i>PLANTING SCHEDULE</i>	L103

LANDSCAPE CONCEPT DESIGN PACKAGE

Takapuna Playground

SEP 2022





MASS PLANTING BEHIND TOILET BLOCK TO DETER FROM PEDESTRIAN ACCESS

RELOCATED POHUTUKAWA

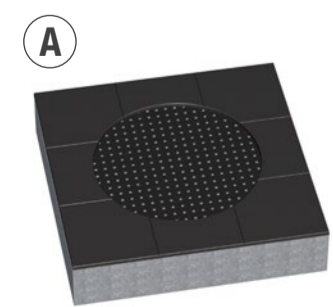
STEPS/LOGS DOWN THROUGH GARDEN TO RUBBER PLAY AREA

NIKAU PALMS LINE THE GARDEN STRIP FOR VERTICAL STRUCTURE AND COASTAL AESTHETIC

ROCKS PLACED TO DETER VEHICLES FROM PARKING UNDER POHUTUKAWAS

MASS GROUNDCOVER BELOW POHUTUKAWAS REQUIRES 100-150MM MULCH/SOIL LAYER ON TOP OF EXISTING LEVELS. TIMEBR EDGE REQUIRED IN PLACES - USE SMALL PLANT GRADES

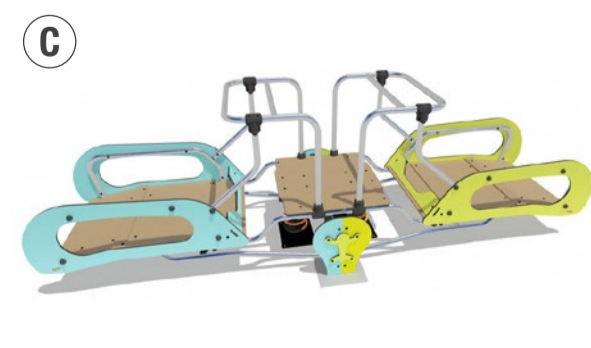
MASS PLANTING AMONGST NEW SHOWER AND FOOTPATH



TRAMPOLINE



SPRING CAR



SEESAW



SWING



MONORAIL



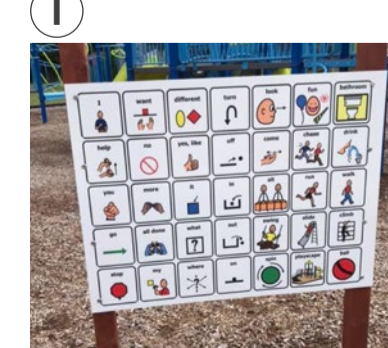
SINGING FLOWERS



RUBBER BALLS



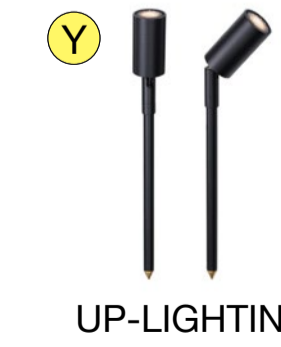
TALK TUBES



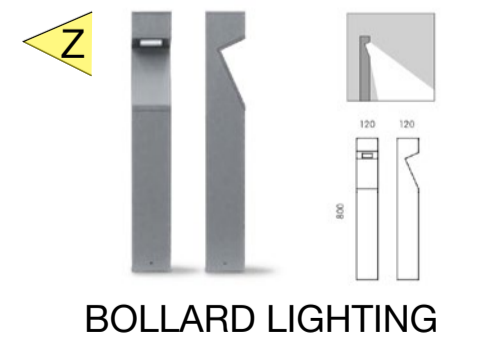
PLAY PANEL



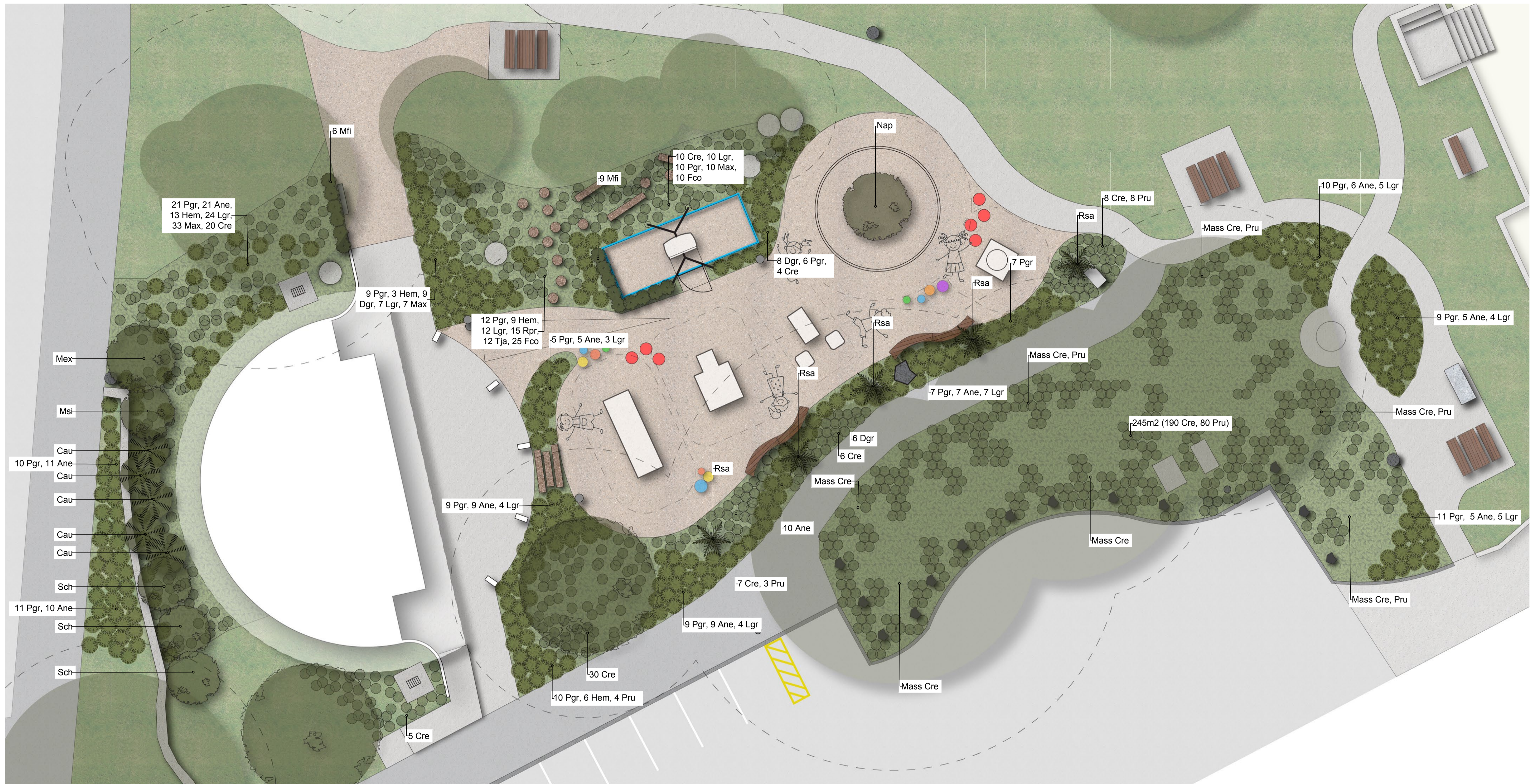
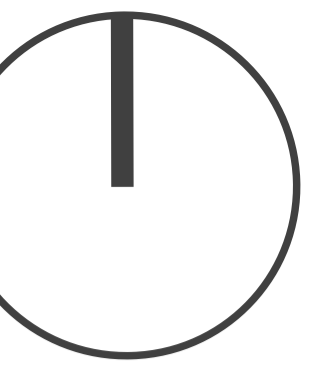
MOUND WITH TUNNEL AND SLIDE



UP-LIGHTING



BOLLARD LIGHTING



PLANTING PALETTE



SOPHORA CHATHAMICA
'KOWHAI'
(SCH)



NESTEGIS APETALA
'COASTAL MAIRE'
(NAP)



RHOPALOSTYLIS SAPIDA
'NIKAU'
(RSA)



MAGNOLIA FIGO
'PORT WINE MAGNOLIA'
(MFI)



PHORMIUM COOKIANUM
'EMERALD GEM'
(PCO)



ASTELIA NERVOSA
'WESTLAND' BRONZE BUSH
FLAX (ANE)



PACHYSTEGIA RUFA
'MARLBOROUGH ROCK DAISY'
(PRU)



COPROSMA REPENS
'POOR KNIGHTS'
(CRE)



Planting Schedule



METROSIDEROS EXCELSA
'SPRINGFIRE'
(MEX)



SOPHORA CHATHAMICA
'KOWHAI'
(SCH)



MERYTA SINCLAIRII
'PUKA'
(MSI)



NESTEGIS APETALA
'COASTAL MAIRE'
(NAP)



RHOPALOSTYLIS SAPIDA
'NIKAU'
(RSA)



CORDYLINAE AUSTRALIS
'CABBAGE TREE'
(CAU)



MAGNOLIA FIGO
'PORT WINE MAGNOLIA'
(MFI)



PHORMIUM COOKIANUM
'EMERALD GEM'
(PCO)



ASTELIA NERVOSA
'WESTLAND' BRONZE BUSH
FLAX (ANE)



LIBERTIA GRANDIFLORA
'NZ IRIS'
(LGR)



PACHYSTEGIA RUFA
'MARLBOROUGH ROCK DAISY'
(PRU)



HEBE 'EMERALD GEM'
(HEM)



COPROSMA REPENS
'POOR KNIGHTS'
(CRE)



MUEHLENBECKIA AXILLARIS
(MAX)



FREESIA 'CORVETTE'
(FCO)



TRACHELOSPERMUM
JASMINOIDES 'STAR JASMINE'
(TJA)



ROSMARINUS PROSTRATA
'CREEPING ROSEMARY'
(RPR)

Takapuna Playground						
Planting Schedule						
Code	Botanical Name	Common Name	Notes	Spacing	Quantity/ Percentage mix	Size
Specimen Trees						
Mex	<i>Metrosideros excelsa</i> 'Maori Princess'	Pohutukawa	Specimen Tree	As Shown	1	135L
Sch	<i>Sophora chathamica</i>	Kōwhai	Specimen Tree	As Shown	3	45L
Msi	<i>Meryta Sinclairii</i>	Puka	Specimen Tree	As Shown	1	135L
Nap	<i>Nestegis apetala</i>	Coastal Maire	Specimen Tree	As Shown	1	135L
Rsa	<i>Rhopalostylis sapida</i>	Nikau Palm	Specimen Tree	As Shown	5	45L
Cau	<i>Cordyline Australis</i>	Cabbage Tree	Specimen Tree	As Shown	5	45L
Hedging/Shelter Plants						
Mfi	<i>Magnolia figo</i>	Port Wine Magnolia	Hedging (sensory smell)	650	17	45L
Understorey Planting						
Pgr	<i>Phormium Green Dwarf/Emerald Gem</i>	Dwarf Flax	Mass planting	800	156	2L
Ane	<i>Astelia nervosa</i> 'Westland'	Westland Silver Spear	Mass planting	800	98	2L
Lgr	<i>Libertia grandiflora</i>	NZ Iris	Mass planting	600	85	2L
Pru	<i>Pachystegia Rufa</i>	Marlborough Rock Daisy	Mass planting	500	95	2L
Hem	<i>Hebe 'Emerald Gem'</i>	Hebe Emerald Gem	Grouped planting	600	31	2L
Cre	<i>Coprosma repens</i> 'Poor Knights'	Coprosma Poor Knights	Ground cover	800	280	1L
Max	<i>Muehlenbeckia axillaris</i>	Pohuehue	Ground cover	800	50	1L
Sensory Garden						
Fco	<i>Freesia Corvette</i>	Freesia	Corms planted in Apr-May	5-8cm	35	Individual
Tja	<i>Trachelospermum jasminoides</i>	Star Jasmine	Ground cover/Climber	800	12	1L
Rpr	<i>Rosmarinus prostrata</i>	Creeping Rosemary	Ground cover	800	15	1L

NOTES:

Coprosma repens & Pachystegia Rufa below existing Pohutukawa:

To get these plants established, a raised bed with 100-150mm mulch/soil layer on top of existing levels will need to be created underneath the Pohutukawa as they have a very fibrous root system. The pohutukawa roots are going to invade this raised bed, so it is important that mulch or garden mix is added to the garden yearly. Feed plants with a general purpose fertiliser to compensate for the nutrients the Pohutukawa will extract from the soil.